



CEILING MOUNTED SERVICE COLUMN PNEUMATIC RETRACTABLE

SPECIFICATIONS:

The Pneumatic ceiling column shall be an Amico **Alert-1** series.

The Pneumatic section of the column is activated by an air cylinder mounted in the internal shell of the column, with the aid of a wall mounted switch or with a bullnose (head) mounted switch. The column can be lowered or raised to the desired position.

The upper and lower section shrouds are made of 16 gauge 304 stainless steel with a # 4 satin finish and comes complete with:

- Removable access panel
- Stainless steel ceiling collar
- A heavy gauge steel mounting plate, equipped with console gas outlets for all medical gas connections above the ceiling line.

All electrical and medical gas services are provided to the face of the lower section by means of flexible hoses and liquid tight flexible metal conduit. All threaded connections comply with NFPA, CGA and DISS recommendations preventing interchanging of connections.

All services are pre-assembled and factory tested. Standard dimensions are 13-9/16" X 13-9/16" for the upper section and 12" X 12" for the lower section. Electrical devices are pre-wired, unless otherwise stated.

The Pneumatic Column accommodates:

- Up to 12 gas service outlets in any desired sequence.
- Electrical outlets can be added on either of the four sides of the column.
- Any combination of ground jacks, computer outlets, communication devices, slides and I.V. hooks, can also be mounted on the side panels.

The Ceiling Column is **UL** Listed to U.S. and Canadian safety standards..

Amico products comply with NFPA-99.



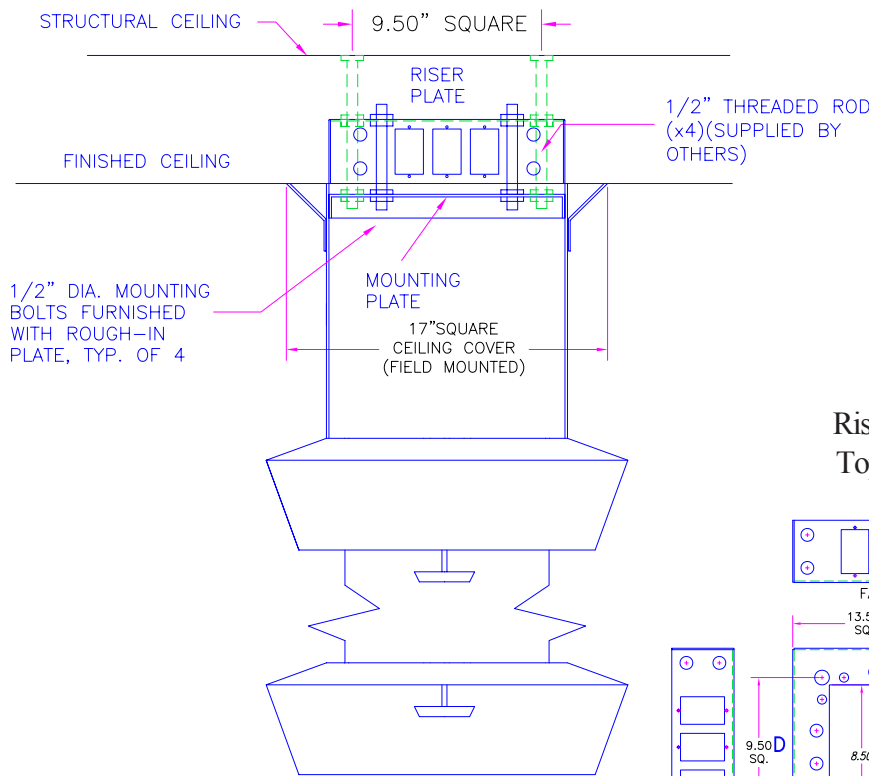
FEATURES:

- The Pneumatic ceiling column increases management of overcrowded areas when supplying medical gas and electrical services in operating rooms.
- When not in use, it can easily be stored away by raising the telescopic section, this will avoid possible accidental contact with medical personnel.
- When needed, the lower section of the column can be lowered to facilitate hook-up of services.

Ceiling Column Model Number:
C-COL-PNEU

PROJECT:

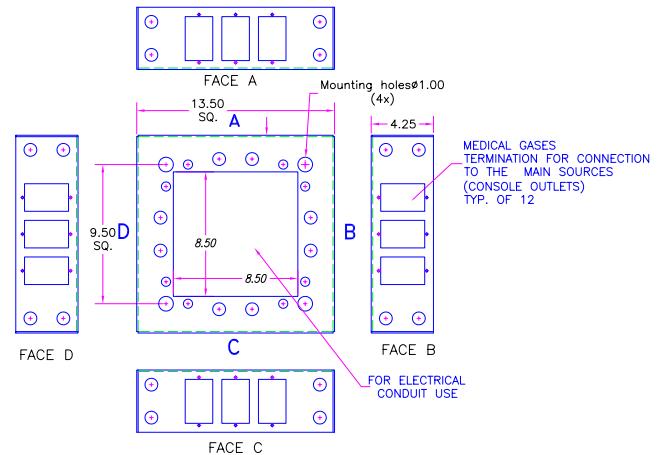
INSTALLATION INFORMATION



NOTES

1. 1/2" Support rods located for total support of fixture (minimum 400lb. load), all labour and materials for support fabrication including nuts and washers for installation supplied by General Contractor.
2. Contractor has final responsibility for the strength and stability of the mounting structure.
3. Mounting structure supplied by others.

RiserPlate
TopView

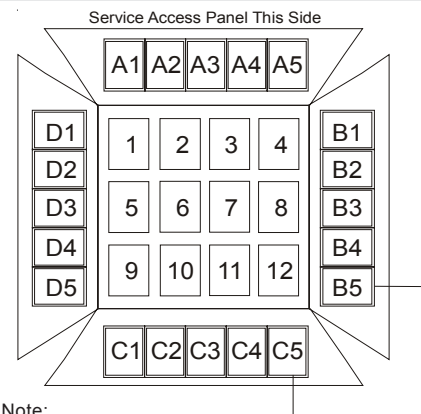


UTILITIES LOCATION

Customer Order Information

Ceiling columns are custom manufactured to customers specifications. The drawing (right), indicates the possible locations of services. Refer to pages 5-9 of the Amico Approval Booklets. A total of 32 services may be installed. AMICO requires a signed, approved copy of these specifications before fabrication will begin.

Number of units: _____
 Column Height: _____
 Specify Ceiling Height: 9'-0" / 9'-6" / 10'-0".
 Positions 1-12 = Medical Gas Outlets
 Positions A1-D5 = Electrical and/or Communication Devices



Note:
Two receptacles cannot be placed together in the corners.

Bottom View
Looking Up