



# CEILING MOUNTED SERVICE COLUMN MANUAL RETRACTABLE

## SPECIFICATIONS:

The retractable ceiling column shall be an Amico **Alert-1** series.

The column shall consist of an upper section for rigid mounting at the ceiling level and a telescopic lower section capable of being extended to a maximum of 18 inches.

The retractable section of the column is activated by a coiled spring mechanism and can be lowered or raised to any position by rotation of the handle. With the aid of an internal tracking system, the movement of the telescopic portion will glide freely up or down.

The upper and lower section shrouds are made of 16 gauge 304 stainless steel with a # 4 satin finish and are complete with:

- Removable access panel
- Stainless steel ceiling collar
- A heavy gauge steel mounting plate, equipped with console gas outlets for all medical gas connections above the ceiling line.

All electrical and medical gas services are provided to the face of the lower section by means of flexible hoses and liquid tight conduits. All threaded connections comply with NFPA, CGA and DISS recommendations preventing inter-changing of connections. All services are pre-assembled and factory tested. Standard dimensions are 13-9/16" X 13-9/16" for the upper section and 12" X 12" for the lower section. Electrical devices are pre-wired, unless otherwise stated.

NOTE: Ceiling height is to be determined by the customer.

### The Retractable Column accommodates:

- Up to 10 gas service outlets in any desired sequence.
- Electrical outlets can be added on either of the four sides of the column.
- Any combination of ground jacks, computer outlets, communication devices, slides and I.V. hooks, can also be mounted on the side panels.

The Ceiling Column is **UL** Listed to U.S. and Canadian safety standards.

Amico products comply with NFPA-99.



## FEATURES:

- The retractable ceiling column increases management of overcrowded areas when supplying medical gas and electrical services in operating rooms.
- When not in use, the lower section can easily be raised by rotating the handle. This can avoid possible accidental contact with medical personnel.
- When required the face of the column can be lowered to facilitate hook-up of services.

**Ceiling Column Model Number:**  
**C-COL-MANU**

## PROJECT:

---

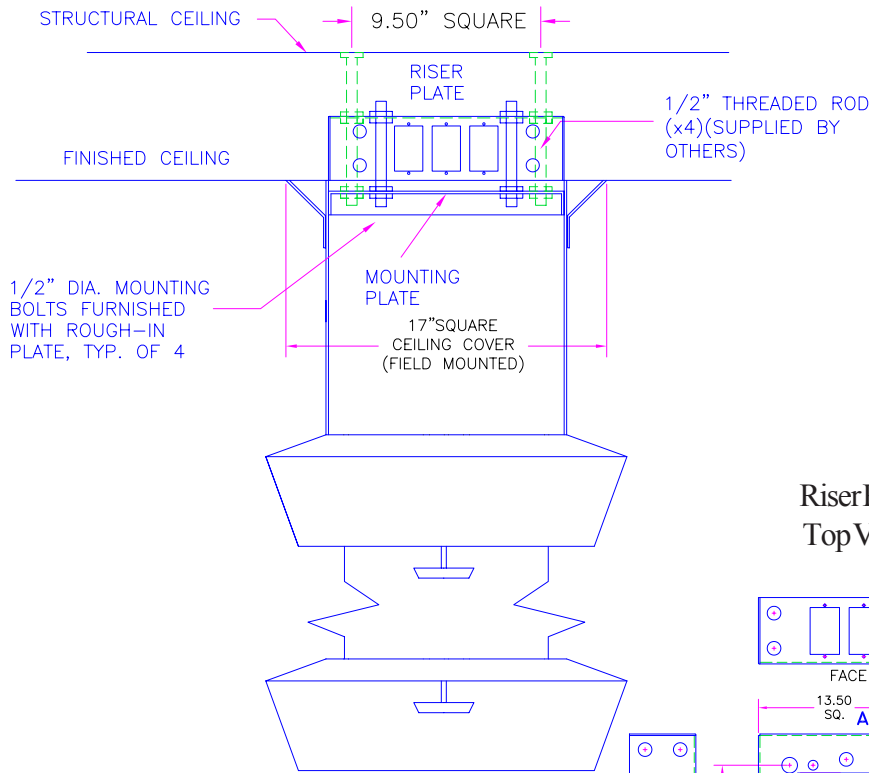


---



---

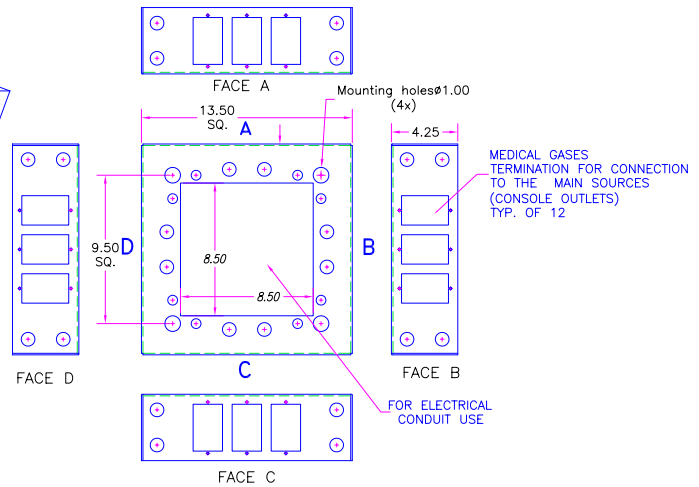
# INSTALLATION INFORMATION



## NOTES

1. 1/2" Support rods located for total support of fixture (minimum 400lb. load), all labour and materials for support fabrication including nuts and washers for installation supplied by General Contractor.
2. Contractor has final responsibility for the strength and stability of the mounting structure.
3. Mounting structure supplied by others.

RiserPlate  
Top View

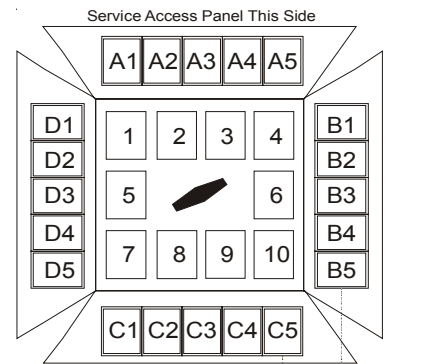


# UTILITIES LOCATION

## Customer Order Information

Ceiling columns are custom manufactured to customers specifications. The drawing (right), indicates the possible locations of services. Refer to pages 5-9 of the Amico Approval Booklets. A total of 30 services may be installed for a NFPA column. AMICO requires a signed, approved copy of these specifications before fabrication will begin.

Number of units: \_\_\_\_\_  
 Ceiling Column height: \_\_\_\_\_  
 Specify Ceiling Height: 9'-0" / 9'-6" / 10'-0".  
 Positions 1-10 = Medical Gas Outlets  
 Positions A1-D5 = Electrical and/or Communication Devices



Bottom View  
Looking Up