



Architectural Products

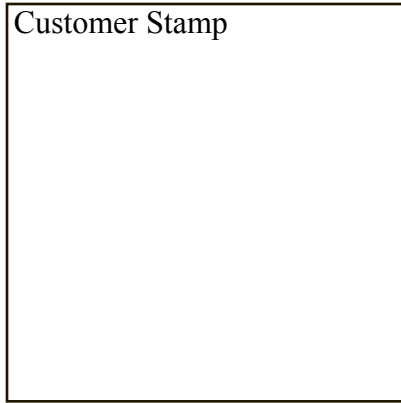
Submittal Package



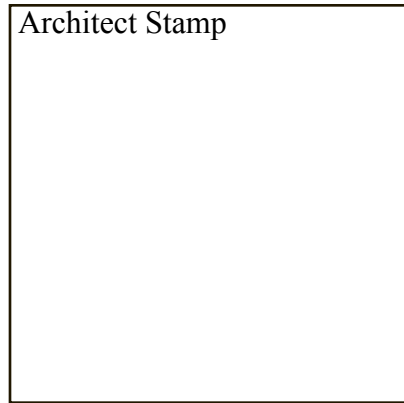
Prepared For:
Prepared By: Amico Corporation /
Date:

Transmittal Page

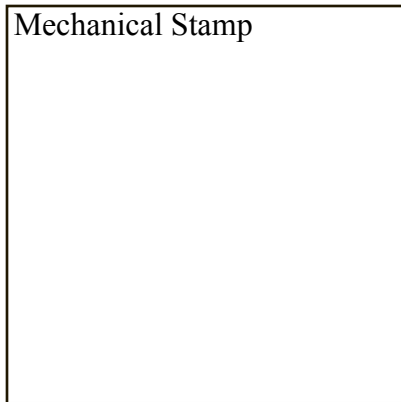
Customer Stamp



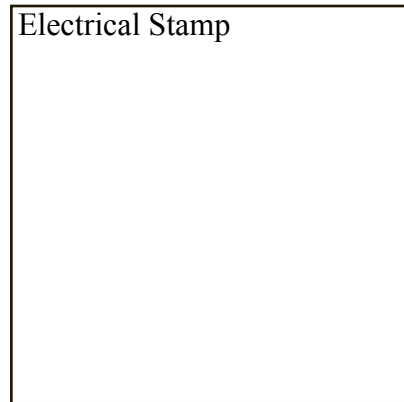
Architect Stamp



Mechanical Stamp



Electrical Stamp



IMPORTANT

Amico cannot commence manufacturing until one completely “Approved” copy of these Shop Drawings are returned to our attention.

THIS SHOP DRAWING BOOKLET INCLUDES:

| | |
|--|----------------------------------|
| | GENERAL PRODUCT SPECIFICATION(S) |
| | MANUFACTURING VERIFICATIONS |
| | ELEVATION DRAWING(S) |
| | MANUFACTURER WARRANTY STATEMENT |
| | INSTALLATION INSTRUCTIONS |
| | LISTING OF APPROVALS |

MANUFACTURING OF THE PRODUCT(S) COVERED BY THIS SHOP DRAWING BOOKLET WILL NOT COMMENCE UNTIL ALL VERIFICATIONS ARE INITIALLED WHERE REQUIRED, AND INFORMATION PROVIDED WHERE REQUIRED.

*****IMPORTANT*****

The following statement forms an integral part of this shop drawing submittal. By approving and returning this submittal, the customer acknowledges and accepts the following statement.

THE INFORMATION HEREIN FORMS A “MANUFACTURING BLUEPRINT”, AND SHALL TAKE PRECEDENCE OVER ALL OTHER DOCUMENTATION, INCLUDING BUT NOT LIMITED TO, PROJECT SPECIFICATIONS, ADDENDA, AND DRAWINGS.

3. Provisions

Nurse call equipment. All nurse call equipment shall be furnished and installed by others as indicated in the plans and specifications. Amico Corporation shall provide a pull cord for use by the nurse call installer.

Code Blue. Code Blue equipment shall be furnished and installed by others as indicated in the plans and specifications. Amico Corporation shall provide a labeled pull cord for use by contractor.

Monitoring equipment. Monitor equipment shall be provided and installed by others. Amico Corporation shall provide a matching blank plate for the monitor receptacle to the monitor supplier when requested. The wall unit will include a factory-installed raceway and pull cord to accommodate the monitor wiring. Where specified, a Tilt Swivel Monitor Bracket and slide shall be provided to support the monitor.

Computer interconnects. A computer system furnished by others shall be installed at locations as shown on the plans and specifications. Amico Corporation shall provide a matching blank plate for the computer-jack when requested. The wall unit will include a factory-installed raceway and pull cord to accommodate the computer system wiring.

Telephone Provisions. Shall include a 1/2" conduit with "Pull-cord" to junction box. Telephone Jack shall be installed and wired by contractor or local telephone company.

4. Accessories

Accessories shall be provided in the quantities and types as shown in the submittal. Accessories shall be installed by others in the locations as determined by the end user. See accessories catalog for additional information

5. Installation

Mounting of the product shall be the responsibility of the installing contractor. This includes receiving, storage, erection, overhead bracing, clean up, touch up, carton disposal etc. This contractor shall supply

all necessary installation material including such items as tools, fasteners, caulking and electric lamps not supplied by Amico Corporation.

The electrical contractor shall be responsible for all electrical hook-up at service connection locations plus interconnect wiring on multi-section units. After the installation is complete the electrical contractor shall test equipment function plus electrical receptacles and grounding in accordance with local electrical code requirements.

The medical gas contractor shall be responsible for piping and hook-up of all medical gas services. In addition, hook-up of piping between sections on multi-section units shall be the responsibility of this contractor. The medical gas contractor shall be responsible for purging, pressure testing, gas identification and system certification in accordance with NFPA 99 or CSA-Z305.1.

Accessory items shall be installed in accordance with the manufacturer's instructions and shall be the responsibility of this section. The installation shall take place under the direction of the hospital.

Note: All Specifications are nominal and subject to change without notice.

AMICO VERIFICATIONS

WE CANNOT BEGIN PRODUCTION WITHOUT THIS INFORMATION

Please call

with any questions.

Tel:

Fax:

1) GENERAL

- Please initial thus verifying the quantity shown on each elevation drawing is correct. Additionally, where applicable, please identify in **RED INK** the number of “opposite” units required for each elevation (“opposite” shall be defined as mirror image”).
- Please confirm the quantity of “As Shown” and “Mirror Image” units required for each elevation:

| <u>Total Qty</u> | <u>“As Shown”</u> | <u>“Mirror Image”</u> |
|------------------|-------------------|-----------------------|
|------------------|-------------------|-----------------------|

- Please initial thus verifying that all service and provision components are located as required on each elevation drawing. Please mark any corrections on the elevation drawing(s) in **RED INK**.
- All product covered by these verifications and related elevation drawings shall be built to manufacturer’s standard specification (copy enclosed); exceptions noted herein.
- Please provide the required on-site delivery date here: _____

Standard delivery shall be 8 - 10 weeks from factory receipt of “APPROVED” shop drawings (containing additional information where requested) and any applicable Division 15 & 16 supplied components.

Delivery date identified above shall not extend beyond the quoted delivery by date of : _____

- When elevation drawings reference specific room numbers, the manufacturer will endeavor to label product-shipping cartons with the appropriate room number. It remains, however, the sole responsibility of the installing contractor to ensure all products are installed in the correct location(s) within the correct room(s).

2) MOUNTING HARDWARE / SPECIAL REQUIREMENTS

- Headwalls are shipped complete with a wall-mounting bracket, from which the headwall is suspended prior to final wall attachment. Hardware required to secure mounting bracket to wall, and headwall to wall, shall be supplied by others to suit wall type.
- Anti-sway ceiling structure required for installation of Power Columns shall be designed, supplied and installed by others.

3) PRODUCT COLORS

- Line voltage devices shall be factory supplied, installed, and wired with #10 or #12, stranded copper wire (THHN, 600 volt insulation) for hot and neutral (black and white). Grounds shall be #10, type R, THHN stranded copper wire (green). All ground conductors shall be installed in conduit.
- Please initial thus verifying the power source is 120/208 volts.
- Please select one of the following:
 - Circuits shall be wired with shared neutrals.
 - Circuits shall be wired with individual neutrals.
- Please select one of the following:
 - All receptacles shall be mounted with ground pin down.
 - All receptacles shall be mounted with ground pin up.
- Provisions for “future” line voltage electrical devices shall consist of back boxes, conduit from back boxes to junction box, and a blank stainless steel cover plate.
- All line voltage device wiring shall be terminated within a junction box located within the headwall as indicated on the elevation drawings. All connections to hospital services shall be made by others.
- Overbed light referenced. Hospital grade overbed lights should include a safety switch leg for integration within the power circuit for an electric bed receptacle. When provided, wiring of such circuit shall be the responsibility of others. If provided, please identify in **RED INK** which receptacle on the headwall will be connected to this circuit.

When wiring a bed receptacle to an overbed light safety switch leg, we recommend using a simplex receptacle and labeling it “for bed use only, not for life support equipment”.

6) LOW VOLTAGE PROVISIONS

- Provisions only, consisting of back boxes and conduit, will be supplied for all low voltage devices. Devices shall be supplied and site installed by others. Please circle the required opening and back box gang size required for each of the following low voltage provisions:

| <u>Device</u> | <u>Opening Size (gang)</u> | | | | <u>Back Box Size (gang)</u> | | | |
|--------------------|----------------------------|---|---|---|-----------------------------|---|---|---|
| Nurse Call (NC) | 1 | 2 | 3 | 4 | 1 | 2 | 3 | 4 |
| Nurse Assist (NA) | 1 | 2 | 3 | 4 | 1 | 2 | 3 | 4 |
| Code Blue (CB) | 1 | 2 | 3 | 4 | 1 | 2 | 3 | 4 |
| Telephone/Data (T) | 1 | 2 | 3 | 4 | 1 | 2 | 3 | 4 |

**SHOP DRAWINGS RECEIVED WITHOUT THIS INFORMATION WILL BE RETURNED.
PRODUCTION WILL NOT COMMENCE WITHOUT THIS CRITICAL INFORMATION.**

- Provisions for “future” line voltage electrical devices shall consist of back boxes, conduit from back boxes to junction box, and a blank anodized aluminum cover plate.

7) MEDICAL GASES/VACUUM

— Medical gas terminal units (outlets) shall be _____ console style outlets

— Headwall manufacturer shall provide all medical gas terminations with either 1/2" or 3/4" diameter type "K" seamless copper pipes, factory installed. Factory installed copper pipes shall be cut to length and terminate as indicated on elevation drawings.

— Connection between hospital pipeline systems and headwall pipe stubs shall be brazed on site by others, in accordance with local building codes, project specifications, and NFPA 99 and /or CAN CSA Z305.1 (latest edition).

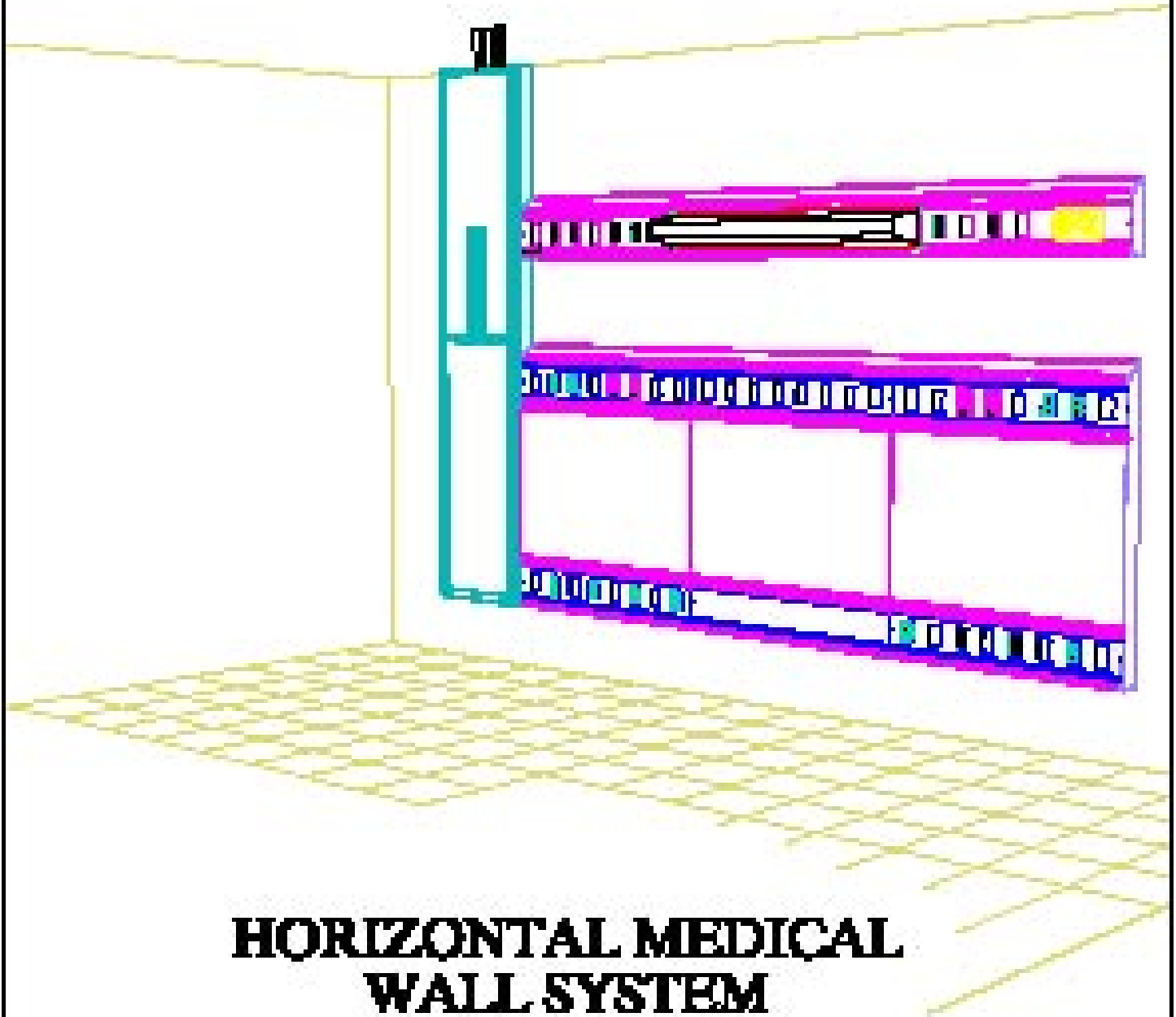
8) OTHER

August 28, 2000

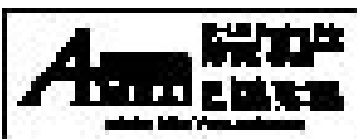
WARRANTY POLICY

1. Amico Corporation warrants its Medical Gas Equipment to be free from defects in **material** and **workmanship** for a period of twelve (12) months from the date of shipment. Within this period Amico will repair or replace any part on site, or at the factory, which is proven to be defective at Amico's cost.
2. Furthermore, Amico will warrant its **material** to be free from defect for an additional period of four (4) years (five (5) years from the date of shipment). Within this period, Amico will replace any **part**, at no charge, which is proven to be defective. Shipping and Installation costs after the first twelve (12) months will be borne by the Customer.
3. This warranty is valid only when the product has been properly installed according to Amico specifications, used in a normal manner and serviced according to factory recommendations. It does not cover failures due to damage which occurs in shipments or failures which resulted from accidents, misuse, abuse, neglect, mishandling, alteration, misapplication or damage that may be attributable to acts of God.
4. Amico shall not be liable for incidental or consequential damages resulting from the use of the equipment.
5. All claims for warranty must first be approved by Amico's Service Department (service@amico.com or 1-877-462-6426). A valid Return Goods Authorization (RGA) number must be obtained from Amico prior to commencement of any service work. Warranty work, which has not been pre-authorized by Amico, will **not** be reimbursed.

INSTALLATION INSTRUCTIONS



HORIZONTAL MEDICAL WALL SYSTEM



PREPARATION

1. Review a copy of the final approved shop drawings/technical details. This document will provide you with technical details specific to your installation, such as:

Wiring Diagrams

Equipment types & quantities

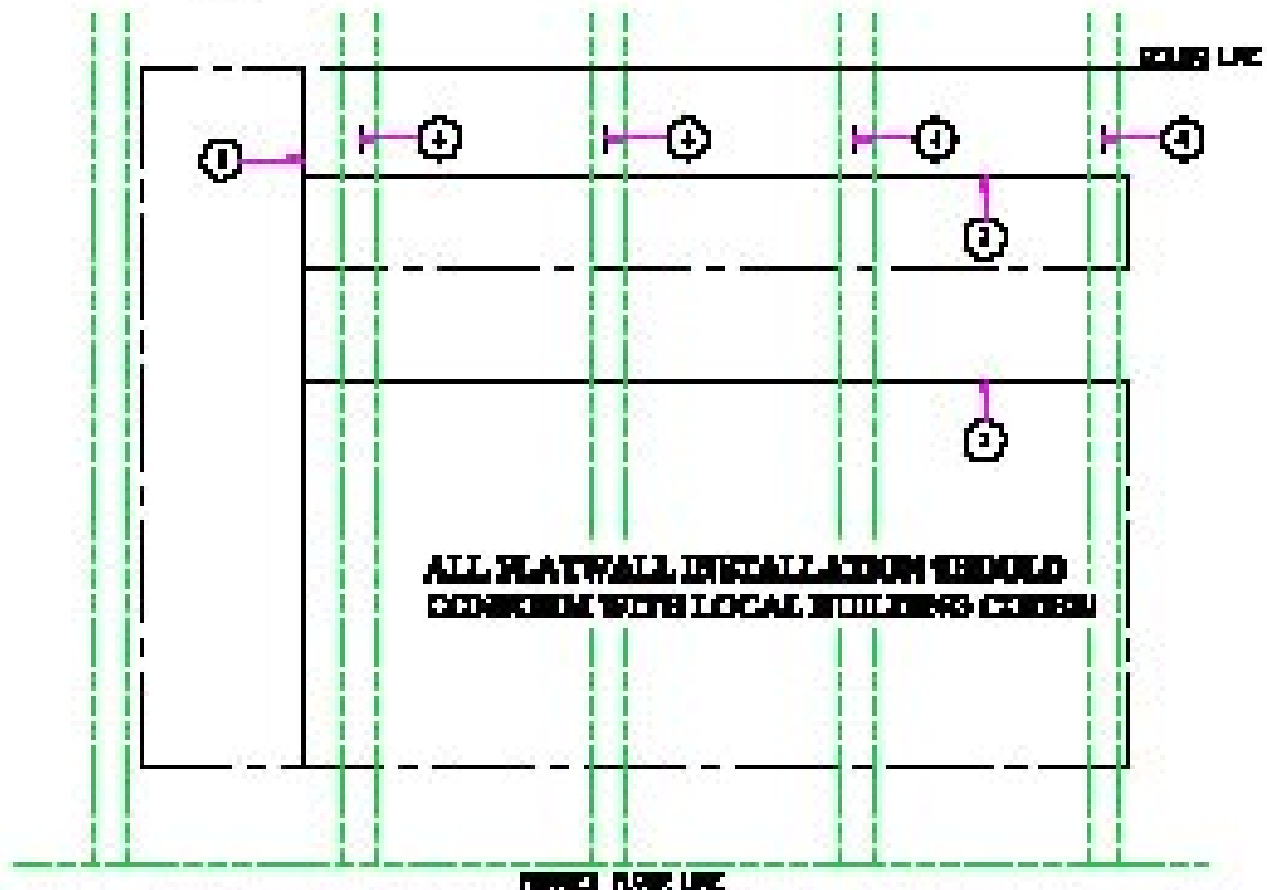
Shop drawings of each type wall

Room numbers and location in the building (if applicable)

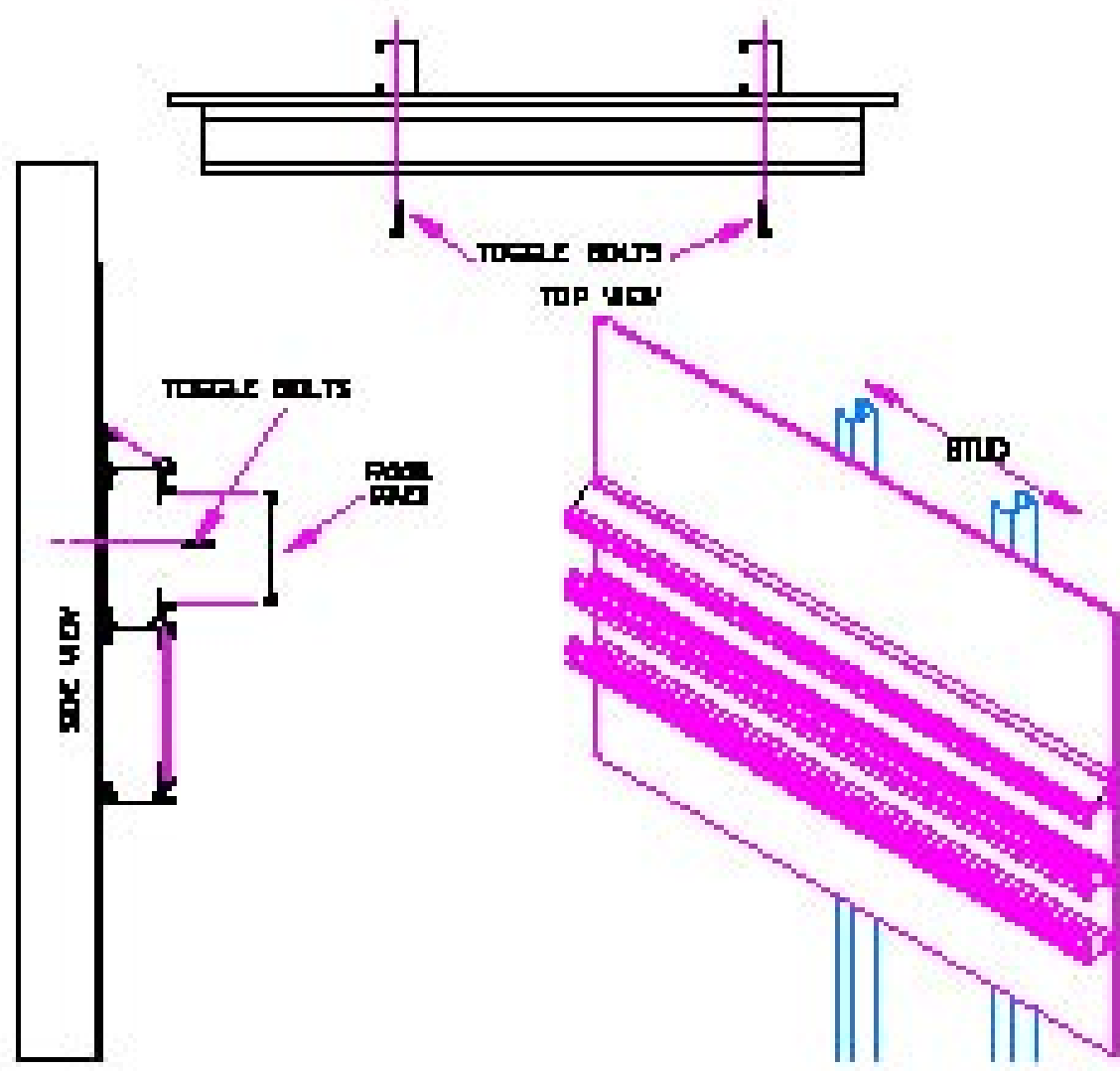
2. Locate the modular wall unit from the shipping boxes that you wish to install. The contents of each shipping box are listed on the shipping documents.

TECHNICAL WALL INSTALLATION

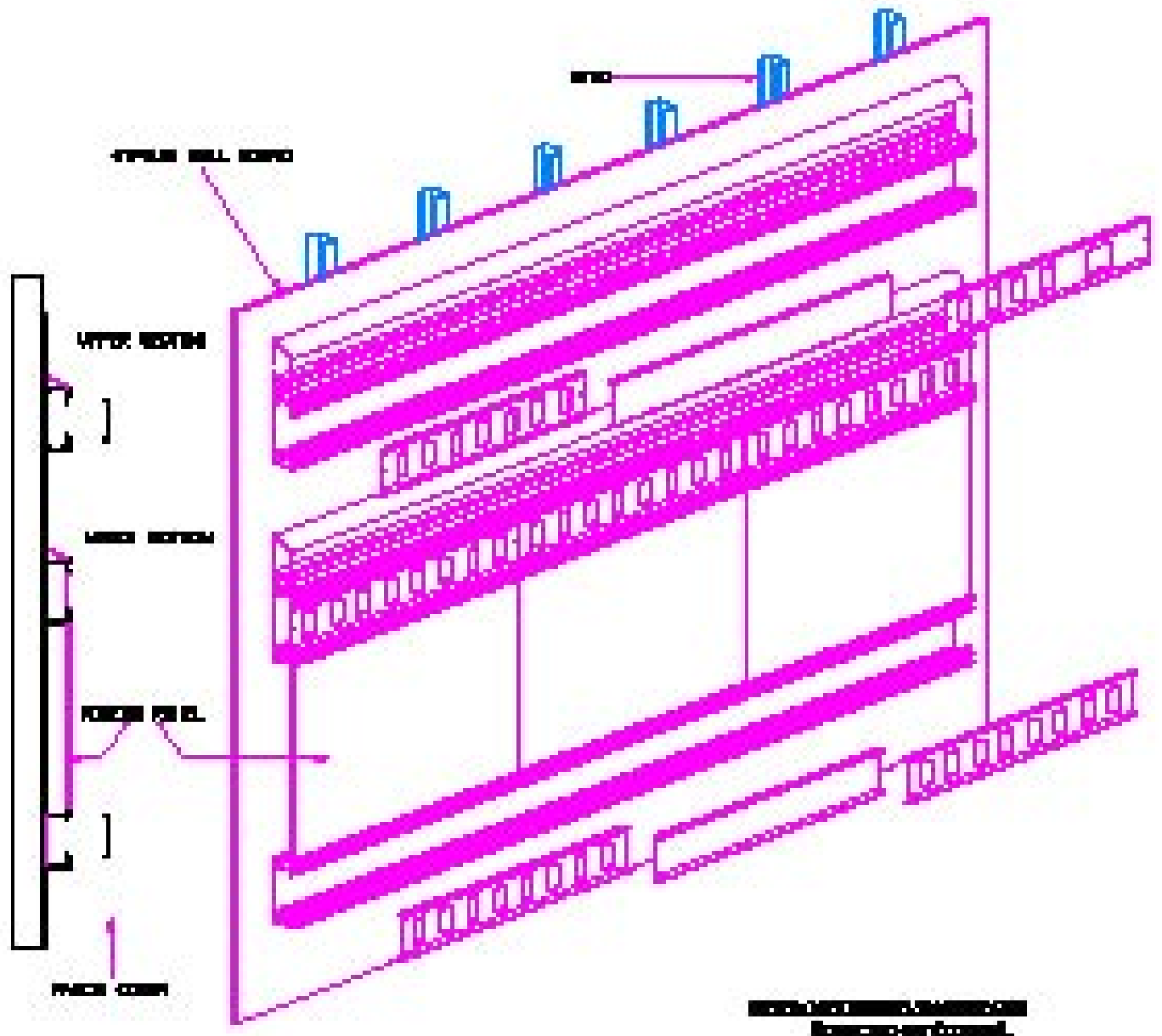
1. Determine the finish corner location of the vertical studs on the building wall.
2. Mark a vertical line on the building at this location.
3. Using shop drawings, mark horizontal lines on the building wall at the location of the top of each modular wall section.
4. Using a red laser, mark the location of metal studs in the building wall partition system that align with the horizontal wall sections.



3. Remove electrical ducts cover and install 3/16" toggle bolts using connecting holes provided.
 Note: Toggle bolts in lower unit is perfectly lined up with vertical and horizontal lines.
4. If either end of Electrical section exceeds 5' or more past a metal stud, use a 3/16" toggle bolt in corner end of section.
5. Reserve access panels and do all necessary connections (electrical and plumbing) to the main section.
6. Mount the duct covers back in place.
7. Repeat steps 5 through 6 on lower horizontal section.



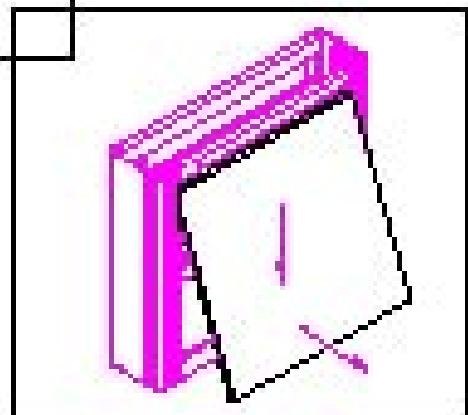
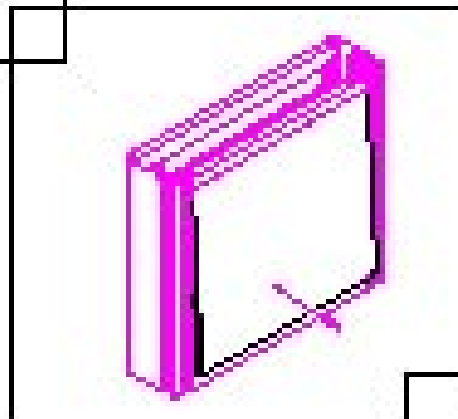
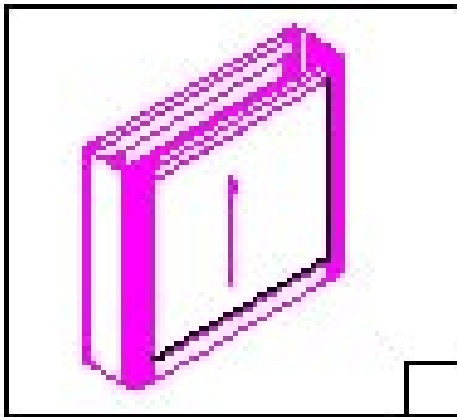
© 2014 BENTON & BOWLES
 BENTON & BOWLES



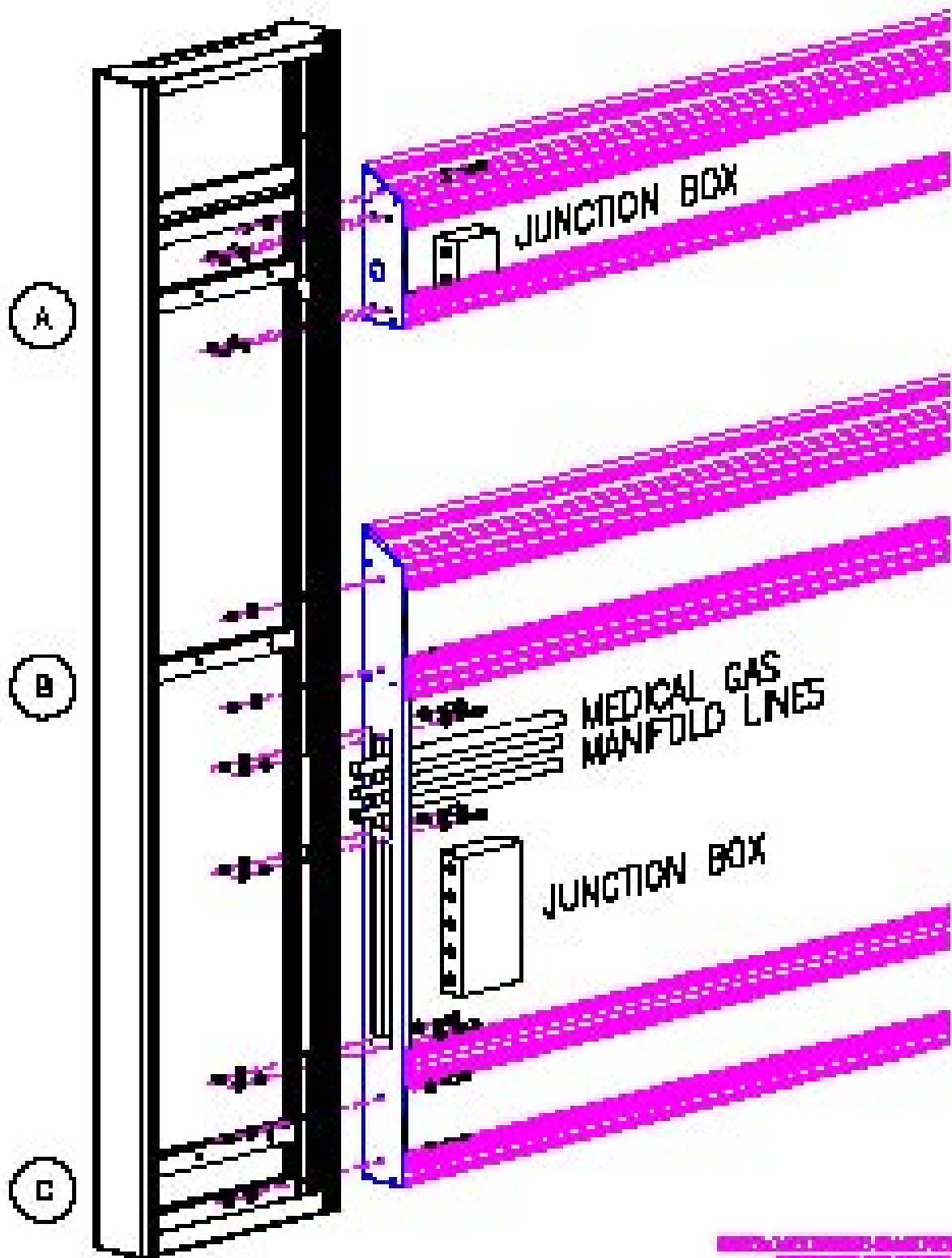
© 2011 McGraw-Hill Construction Information Group
All rights reserved. No part of this publication may be reproduced, stored in a retrieval system, or transmitted, in any form or by any means, electronic, mechanical, photocopying, recording, or by any information storage and retrieval system, without the prior written permission of McGraw-Hill Construction Information Group.

VERTICAL SURFACE CLASS MOUNTING

1. Remove front access panel as shown below.
 - Slide and push up the access panel until it shows the bottom edge, let the panel slide down and at the same time pulling it towards you (Use caution, caps if applicable).
2. Mount service class to building walls through upper and lower brackets using 3/16" toggle bolts.
3. Drill horizontal sections in vertical class using 1/4"-3/8" stainless steel bit.
4. (If applicable, use slat brackets) Section boxes are located behind the access panel under slat covers attached to the carrying class.



**© 2008 Emerson Network Power
All rights reserved.**



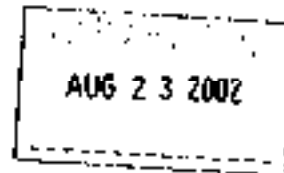
© 2005-2006 GEORGE J. BROWN & SONS, INC.
REVISION 10/05/06



500 North Dearborn Street, Suite 600
Chicago, Illinois 60610
Phone: (773) 291-4000
Fax: (773) 291-4001
Website: www.ul.com
E-mail: info@ul.com



AMICO CORP
MR S JAFS
21-121 GRANTON DR
RICHMOND HILL
ON L4B 3N4 CANADA



RE: Project Number(s) - 02NK39938

Your most recent Certification is shown below. You may also view this information, or a portion of this information (depending on the product category), on UL's Online Certifications Directory at www.ul.com/database. Please review the text and contact the Conformity Assessment Services staff member who handled your project if revisions are required. For instructions on placing an order for this information in a 3 x 5-inch format, you may refer to the enclosed order form for UL Card Service.

KEZR August 12, 2002
Prefabricated Medical Headwalls and Medical Supply Units

AMICO CORP
21-121 GRANTON DR RICHMOND HILL, ON L4B 3N4 CANADA

E192931

Medical headwall - Medical Headwall with gas outlets

Medical headwall, Model W-BED-LOCATOR Bed locator.
Medical headwalls with gas stations, Models C-COL-MAN, C-COL-PNE, C-COL-STL, C-COL-STAL-1 Ceiling brackets.
Model E-CON-XX Condo unit.
Model E-PEDESTAL Floor pedestal.
Model W-BW-XX-ROCK-XX Horizontal wall.
Models W-PC-XX-FL-XXX, W-PC-XX-XXX-XXX Floor cushions.
Reception Cart, various sizes, Labour Delivery Barniers (LDB).
Model W-FW-XX-FL-XXX Window seal.
XX - Represents the diameter in inches.
XXX - General Care, Special Care or ICU.

LOOK FOR LISTING MARK ON PRODUCT