



CEILING MOUNTED SERVICE RIGID (STATIONARY) - LITE

SPECIFICATIONS:

The Rigid-Lite ceiling column shall be an Amico **Alert-1** series.

The Rigid-Lite ceiling column shall be a 14 3/4" x 14 3/4" square column. The length of the column shall be determined by the finished ceiling height.

The column is supported by a heavy gauge steel mounting plate which shall be attached to the structural support by means of four 1/2" threaded rods (supplied by others).

The shroud is made of 16 gauge 304 stainless steel with a #4 satin finish and includes a full length access panel. All required surface fasteners are stainless steel.

The medical gas piping terminates as blank capped ends 8" above the ceiling.

A stainless steel ceiling collar (made from 4 sections) is supplied with the unit.

All devices are factory installed on the side and on the bottom of the column.

NOTE: Ceiling height is to be determined by the customer.

The Rigid-Lite Column accommodates:

- Up to 12 gas service outlets or any combination of electrical outlets and gas service outlets, can be mounted on the face of the ceiling column.
- Any combination of electrical, ground jacks, computer outlets, communication devices, double I.V. hooks and slides, can also be mounted on the three side panels.

The Ceiling Column is **UL** Listed to U.S. and Canadian safety standards.

Amico products comply with NFPA-99.

Ceiling Column Model Number:

C-COL-LITE

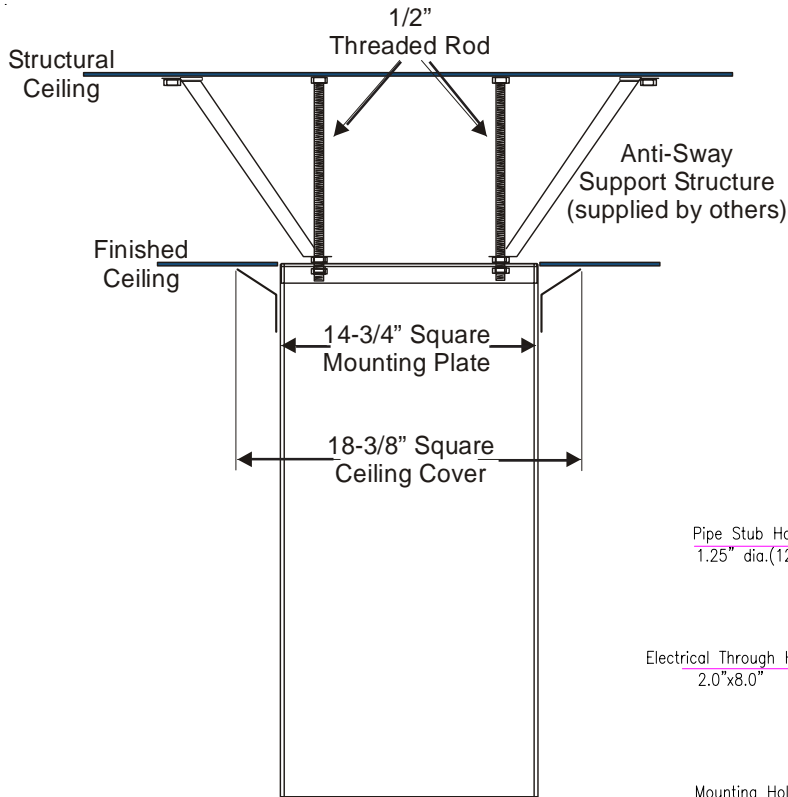


FEATURES:

- The Rigid-Lite ceiling column provides a modern efficient method of supplying gas and electrical services in surgery or special care areas. The ceiling column eliminates hoses and cables from the floor.
- For use in anaesthetizing locations, the gas outlets are bottom mounted. Units for specialized care areas have side mounted outlets to facilitate the use of secondary equipment.

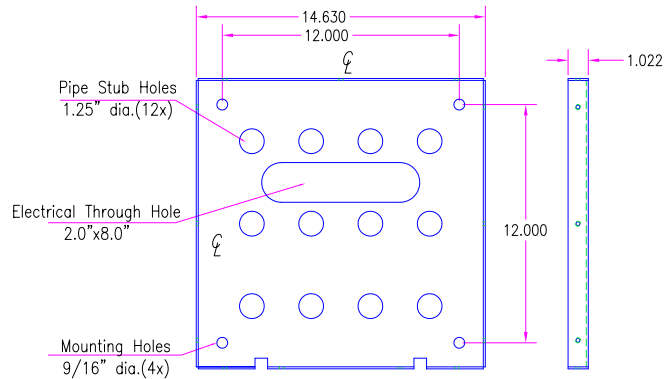
PROJECT:

INSTALLATION INFORMATION



NOTES

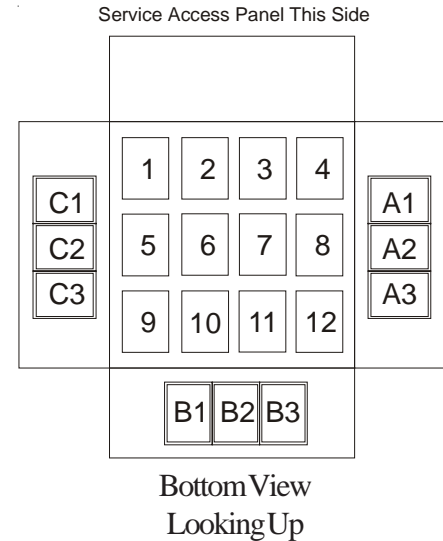
1. 1/2" Support rods located for total support of fixture (minimum 400lb. load). All labour and materials for support fabrication including nuts and washers for installation to be supplied by General Contractor.
2. Contractor has final responsibility for the strength and stability of the mounting structure.
3. Mounting structure supplied by others.



UTILITIES LOCATION

Customer Order Information

Ceiling columns are custom manufactured to customer's specifications. The drawing (right), indicates the possible locations of services. Select the services desired and fill in the appropriate position number or letter (A1-C3 or 1-12) in the accessory chart below. A total of 21 services may be installed. AMICO requires a signed, approved copy of this specification before fabrication will begin.



Number of units: _____
 Ceiling Column height: _____
 Specify Ceiling Height: 9'-0" / 9'-6" / 10'-0".
 Positions 1-12 = Medical Gas Outlets
 Positions A1-C3 = Electrical and/or Communication Devices

CHART POSITION

GAS SERVICE	POSITIONS	ELECTRICAL and/or COMMUNICATION	POSITION
Oxygen		Duplex Receptacle - Hospital Grade - Red or Ivory 125V 20amp	
Medical Air		Duplex Receptacle - Hospital Grade - Red or Ivory 125V 15amp	
MedVac		Simplex Receptacle - Hospital Grade - Red or Ivory 125V 20amp	
WAGD/AGSS		Simplex Receptacle - Hospital Grade - Red or Ivory 125V 15amp	
Nitrogen		Twist-Lock Receptacle - Hospital Grade - 23000HG-Hubbell	
Nitrous Oxide		I.V. Hook - Duplex only	
Carbon Dioxide		Vacuum Bottle Slide Holder	
		Blank for Future Use	